



# NEWSLETTER

Jan 2024

18.01.24 | Issue 370

@mulberryaws  

LOCAL SEND INSPECTIONS

MAW CHOIR

ENVIRONMENT AMBASSADROS

## Year 10 STEM students attend their first Mulberry STEM Academy session of 2024



### THIS ISSUE

UPDATE FOR MEDICAL PLANS

ATTENDANCE CHAMPIONS

LEWIS HAMILTON VISITS  
MULBERRY SCHOOLS TRUST

**Mulberry**  
Academy Woodside

MULBERRY ACADEMY WOODSIDE  
White Hart Lane, Wood Green  
London, N22 5QJ



020 8889 6761



020 8365 8164

# Ms Wallace's Announcements

## LATEST UPDATES FROM THE HEADTEACHER

### DEAR PARENTS AND CARERS,

Happy Friday!

It's been a cold week, but students have been keeping warm with sports clubs, classes, and indoor lunch clubs. There are daily options such as a games club, Lego club, Pokémon club, and library club that students can enjoy.

We have a warm revision room for Year 11 students, and Year 10 and 11 students can drop into the Maths Watch club. Key Stage 3 students can attend the Bedrock catch-up sessions as well.

A reminder that a free hot breakfast is available from 7:30 am.

In Year 10, students visited the East London Mosque this week, and in the next two weeks, we will begin our National History Museum trip for all Year 7 students, followed by Year 8 trips to the Science Museum.

Assessments have been taking place in Year 10 and Year 11, and Year 11 students are invited to our Saturday NTP sessions.

Wishing you all the very best for the weekend.

**Ms. Wallace**

### UPCOMING KEY DATES

#### 6th February

Global Girl Leading at Mulberry School for Girls

#### 7th February

Year 11 parent Evening

#### 12th - 16th February

Half term break



@mulberryaws

## NEXT WEEK WEEK 2

If you have any specific questions regarding the transfer of school to the Mulberry school Trust, please email

[clerk@mulberryschoolstrust.org](mailto:clerk@mulberryschoolstrust.org)

### UPCOMING EVENTS

Year 7 National History Museum trip

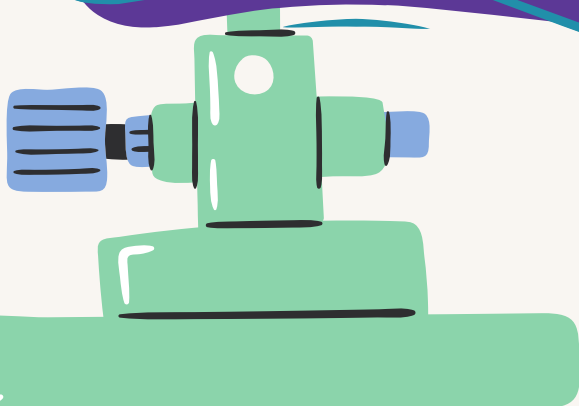
Year 9 Science Museum trip

# Year 10 Mulberry STEM Academy



Our Year 10 STEM students attended the Mulberry STEM Academy on 16th January at Mulberry Academy Shoreditch. These young talents took part in various challenges and exercises to further develop their talent and passion in STEM. This programme allows them to enhance both their academic and technical capabilities, fostering their growth in these crucial areas.

[You can learn more about the programme here](#)



## Attendance Champions



Congratulations to 9I for consistently hitting over 98% attendance - champions of Year 9!



## RE Students visit East London Mosque

Year 10 GCSE RE students visited East London mosque in Whitechapel to learn more about Islam as part of their GCSE studies.

Students learned more about the function of the mosque and how worship is performed. All of the students found the experience very useful.



# LEWIS HAMILTON

VISITS THE MULBERRY SCHOOLS TRUST

The seven-time world champion spent the day with the talented students, who were able to demonstrate their passion and enthusiasm to STEM subjects.

[Click here to watch the video of his visit](#)



ARE YOU  
READY TO  
UNLEASH  
YOUR VOICE



# MAW CHOIR

TRY-  
OUTS!

**WORKSHOP EVERY FRIDAY BY A SPECIALIST!**

Students will be interviewed by the Music Department for a place and those selected will be provided individual passes for the workshop

For enquires please speak to Ms. Danso



INTERVIEWS  
COMING  
SOON

# Local Area SEND

## inspections

### Information for parents and carers

Ofsted and the Care Quality Commission (CQC) are visiting your area, as part of an inspection. We will be looking at arrangements for children and young people with special educational needs and/or disabilities (SEND).

We would like to hear your views about the support that your child receives. You can provide your views by completing an online survey at the following link:

<https://ofsted.smartsurvey.co.uk/p/AreaSend/10284390>

This survey is for parents/carers of children and young people with SEND aged 0-25.

Your views are important to us and will help inspectors understand your child's experience of the SEND arrangements within your area. The survey will close at **9am on 23 January 2024**.

The survey is voluntary, and you do not have to take part. The responses will complement the evidence collected by inspectors during the inspection. We do not ask for your name.

If you complete this survey, you consent to the transfer of your information from SmartSurvey to Ofsted.

For more information about how CQC and Ofsted collect and use data during inspections please see their individual privacy policies:

[CQC privacy statement](#); [Ofsted privacy policy](#)



# UPDATES FOR MEDICAL PLANS



DO YOU HAVE A CHILD WITH A MEDICAL PLAN?

If your child has an existing medical care plan it may be time for an update; if there is any new information that needs to be shared about your child's medical condition please contact [keisha.barnett@woodsidehighschool.co.uk](mailto:keisha.barnett@woodsidehighschool.co.uk)

DOES YOUR CHILD HAVE A NEW MEDICAL CONDITION?

If your child has a new medical condition it is essential that the school is informed so that we can ensure effective care whilst they are at school. Please contact [keisha.barnett@woodsidehighschool.co.uk](mailto:keisha.barnett@woodsidehighschool.co.uk) with any new concerns. Medical documentation is needed for care plans to be put in place correctly.






**Mulberry**  
Academy Woodside



# WORKING PARTY NEEDED



Looking for staff and student  
volunteers to share great ideas  
for the new canteen



If interested please contact Mr Islam  
[faizul.islam@woodsidehighschool.co.uk](mailto:faizul.islam@woodsidehighschool.co.uk)

---

**mulberry**  
Academy Woodside

# RECRUITING ENVIRONMENT AMBASSADORS

Your streets and school need  
you to rid the rubbish!

We are looking to get a group of volunteers together  
to have a walk around the community to pick up  
litter fortnightly and around the school weekly.

**PLEASE SEE YOUR  
FORM TUTOR, HEAD OF  
YEAR OR MS WALLACE  
TO JOIN UP**

## **FIRST MEETING**

Friday, 19th January at 1:15 pm  
in the Ash Canteen





Mulberry  
Academy Woodside

# CAREERS FAIR

6th March, 2024  
9:10 am - 12:50 pm

## We Need Your Help

Each year we hold a Careers Fair that aims to provide our students with various insights into the employment industry.

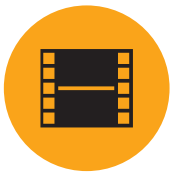
We would be honoured if you or your company could participate in this year's event scheduled for Wednesday 6th March 2024, from 9:10pm to 12:50 pm.

Our attendees for this event will be year 8's and 9's students who are keen to explore and engage with representatives from distinguished companies or professions like yours.

If you are interested in attending or if you have any questions about the event please do not hesitate to contact [serdane.ozcan@woodsidehighschool.co.uk](mailto:serdane.ozcan@woodsidehighschool.co.uk) or alternatively call 020 88896761 ext 151.

Kindly confirm your participation so that we can make the necessary arrangements.

Family support boosts learning, and Lexia is here to help. Try these fun games and activities to reinforce and build your reader's literacy skills from home.

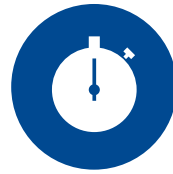


## Act It Out

Can your reader tell when an author is trying to convince them to do or believe something? Exploring how persuasive writing works can improve their reading comprehension.

Look at different ads together – online, on TV, in magazines – and talk about how advertisers try to persuade us. Common techniques are asking rhetorical questions, repeating words and phrases, using inclusive language (friends & family!), and demanding action.

Now your reader is ready to write a script and act out a persuasive ad of their own!



## Beat the Clock

Help build your reader's vocabulary with these Greek word parts:

**arch** (chief): architect, anarchy, hierarchy  
**dem** (people): democracy, pandemic  
**graph** (written): autograph, paragraph  
**ology** (the study of): technology, biology  
**path** (feelings, suffering): empathy, pathetic  
**psych** (mind): psychic, psychologist  
**therm** (heat): thermometer, hypothermia

Make word cards together – write a Greek word part and its meaning on each card. Then, display one card at a time and see who can make the longest list of words that include the Greek word part in one minute. Using a dictionary is recommended!



## Art Studio

Making predictions about what's going to happen next is a great way to improve reading comprehension. Try this fun project with your reader to help them predict like a pro.

Find a comic strip that shows a series of events. Cut out or cover the final panel, and give the comic strip to your reader. Have them predict the next event and draw their own version of the final panel. Then, display the original and talk about how they're similar and how they're different.

If this project is a hit, try pausing in the middle of a book, movie, or TV show and asking your reader to make a prediction about what's next. Have them illustrate or write about their ideas – or simply brainstorm and discuss predictions together.



## Word Play

Your reader can boost their understanding of academic vocabulary by creating personal definitions. Academic vocabulary includes words that are often used in school discussions and texts, like *analyze*, *component*, *deduce*, *evident*, *function*, *impact*, *method*, *perspective*, *relevant*, and *specify*. Look for challenging academic words in online news sources, and have your reader follow these steps to ramp up their vocabulary learning:

1. Brainstorm what you know about the word.
2. Read the dictionary definition.
3. Write a personal definition. This can include examples, pictures, and using the word in a sentence.

Encourage your reader to keep their personal definitions in a journal, and try to use the words together in family conversations.



## Speak Up

Strong readers can make their voices sound natural as they read – as if they're having a conversation. Help your reader develop fluent reading skills with this fun activity.

Work together to select informational articles or short stories to read aloud. Have them practice reading clearly and with expression. Then, encourage them to record themselves to create audiobooks for friends and family.



## Get Moving

Play a game of catch to build your reader's vocabulary. Focus on prefixes and suffixes – meaningful word parts added to the beginning or end of words.

Pick a common prefix (*non-* or *pre-*) or suffix (*-less* or *-able*). Say a word with that word part, and pass a ball to another player. Pass the ball back and forth, thinking of a new word each time. The player left holding the ball after running out of words starts the next round with a new prefix or suffix.



## Scavenger Hunt

Verbs. Interjections. Adjectives. Nouns. Adverbs. It's grammar time! Knowing parts of speech not only supports comprehension, but can also help your reader become a better writer.

Make grammar fun by organizing a scavenger hunt. Review the different parts of speech, and have your reader look for 10 examples of each in a news article.

Then, play a fill-in-the-blank word game. Ask your reader (or have them ask you) to name new words to replace some of the ones they found, using the part of speech as a clue. Have fun reading aloud the new version of the article!

**Verbs** show action or state of being.

**Interjections** show emotion (Wow! Awww. Um).

**Adjectives** describe nouns.

**Nouns** are people, places, or things.

**Adverbs** describe verbs, adjectives, or adverbs.

# Learn to **teach English** in East London with Mulberry College of Teaching

Transforming lives **together**



**Mulberry College of Teaching** is a school-based initial teacher training provider working with a strong partnership of local secondary schools in East London. This means we can offer a richly integrated hub-school programme to ensure that you are immersed in the best research-engaged practice in our schools.

**“As an inner-city London English teacher with roots in the area, I have been privileged to work with, train and teach a diverse multitude of students and staff to feel empowered, independent and to lead.”**

Jordan – English teacher

# Why choose us?

Become part of our professional learning community at Mulberry College of Teaching, where excellent outcomes, collaboration and creative teaching are key to helping all students excel.

You will benefit from the unique and trailblazing partnerships and extensive enrichment opportunities provided through our network of Mulberry Schools Trust and local partner schools.

You will be immersed in schools and will learn from school-based subject specialists as well as a range of expert practitioners whose practice is grounded in the best available research.

**We will fully prepare you for a rewarding job where you will transform lives every day.**

**“I am very grateful for my teacher training at Mulberry. There is no teaching day that is ever the same, which I think is amazing! Every day comes with new experiences, new memories and further professional development.”**

Ameera – Trainee teacher

## Apply now for our secondary English initial teacher training programme (QTS with PGCE)

Go to [www.gov.uk/apply-for-teacher-training](http://www.gov.uk/apply-for-teacher-training) and enter course code **Z275** to start your application.



To find out more, visit our website and prospectus

☎ 020 7791 7202

✉ @MulberryTeach

✉ [info@mulberrycollegeofteaching.org](mailto:info@mulberrycollegeofteaching.org)



WEBSITE



PROSPECTUS

**Mulberry**  
Academy Woodside

Mulberry Academy Woodside is a proud partner of Mulberry College of Teaching

 **Mulberry**  
College of Teaching

Part of the  
**Mulberry**  
Schools Trust