



Mulberry
Academy Woodside

Uniform Booklet 2023-24

MULBERRY ACADEMY WOODSIDE
White Hart Lane, Wood Green
London, N22 5QJ



020 8889 6761



020 8365 8164

Shirt

Plain white shirts only. the top button must be done up and tucked inside trousers at all times.

Tie

Your tie must be on the neck with the top button fastened and be at least 9 blue stripes long.

Blazer

A plain black blazer must be worn at all times around the school building. Your blazer must have school badge on the breast pocket.

Jumper

Jumper should be plain black V-neck. A jumper cannot be worn instead of a blazer.

Shoes

Plain black flat leather polishable sensible shoes.

Skirt

Plain black, 'A' line style skirt.

Trousers

Plain Black, straight cut, medium width, regular fit or pleated trousers.

PRIDE - RESPECT - KINDNESS

Mulberry Academy Woodside Uniform

Students are expected to wear the correct Mulberry Academy Woodside uniform both in the school and on the way to and from the school.

We expect our culture of high expectations to be reflected in our students' uniform - they should wear their uniform with pride. We ask that parents and carers support their child by ensuring that the correct uniform is purchased and worn by students. Should there be any questions about elements of the uniform, or if an expectation is unclear, we ask that parents and carers do not hesitate to contact their child's Head of Year who will be happy to clarify the uniform policy.

The requirement for adherence to the school's uniform will be reinforced by all staff at the school, both teaching and non-teaching. Staff at the school will ensure that when students enter the school grounds, they are in proper uniform. If students are not in full uniform, they will not be able to attend lessons. Students will be sent home to change and they will be expected to return to the school. Judgements on acceptability can only be made by staff at the school.

Where to buy school uniform?

Divine Schoolwear Store

3 Northumberland Park
Tottenham
London
N17 0TA

Kenzie Uniforms

27 Mayes Rd
London
N22 6TN

For PE kit only:

Scan the QR Code
Password: Woodside2023



SHIRTS

- Plain white. No sports shirts allowed.
- Shirt has top button done up and must be tucked inside trousers at all times.



SCHOOL TIE

- A white school shirt must be worn fully buttoned to the neck, along with a correctly positioned school tie.
- Tie must be at least 9 blue stripes long.



BLAZER AND JUMPER

- A plain black blazer must be worn at all times around the school building. The blazer must have the school badge on the breast pocket.
- Jumper should be plain black V-neck. Round-neck jumpers or sweat-shirts are not allowed.
- **A jumper cannot be worn instead of a blazer**



SCHOOL BAGS

- Should be an appropriate size for school books (up to A4 size) and equipment. i.e. Rucksack or messenger bag style
- Small items bags and handbags are not allowed.



TROUSERS

- Plain black, straight cut, medium width, regular fit or pleated; may have turn-ups; shoe length.
- We do not allow any of the following: denim trousers, trousers with rivets, trousers with a low waist, trousers made of any stretchy material, trousers that are tight below the knee, skinny style trousers, trousers made of any fabric other than standard school trouser fabric, leggings / jeggings, thick tights used as trousers, trousers that are not full length.

BANNED TROUSER TYPES



EXAMPLES OF ACCEPTABLE TROUSERS



SKIRTS

Plain black, knee length, 'A' line style, no split, may include a fan pleat; or fully pleated. No lycra.



SOCKS

- Plain black or white socks may be worn
- (Patterned socks are not acceptable)
- Students may wear plain opaque, white or flesh coloured tights. Patterned tights and leg warmers are not acceptable.
- Socks or tights may be worn but not both. Socks must be black or white only
- Students are allowed to wear socks that are calf length (below the knee).
- Students are not allowed to wear black leggings as tights.



SHOES

The only acceptable school shoes at Woodside High School are:

- Plain black flat leather polishable sensible shoes (not boots, plimsolls or trainers) with no coloured trim, laces or con-trasting stitching.
- The examples of footwear below are unacceptable as shoes for school, this includes Nike Air Forces, Converse, Vans (including leather Vans and Converse) black trainers and boots:



EXAMPLES OF ACCEPTABLE SCHOOL SHOES



MAKEUP AND NAILS

- Make up should be minimal.
- Coloured nail varnish, false nails and false eyelashes are not allowed.



HAIR BANDS AND BOBBLES

- Hair bands, scrunchies, bobbles and headscarves must be black or white.
- Patterned and fancy designs or flowers are not acceptable.



BELTS

Belts must be plain black with a small buckle.



PIERCINGS

Facial, body piercings and stretchers are not allowed and the wearing of any facial or body piercing jewellery is not acceptable anywhere on the school premises for health and safety reasons.

BANNED PIERCINGS



Tongue piercings



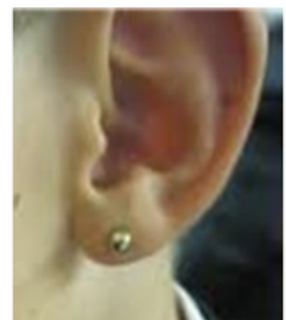
Nose piercings



Eye-brow piercings

ALLOWED PIERCINGS

One pair of plain and simple stud earrings.



TATTOOS

Tattoos are prohibited at Woodside High School. It is illegal for anyone to tattoo a young person under the age of 18. This includes with parental consent.

JEWELLERY AND HAIR

No jewellery, apart from:

- One single or one pair of plain silver or gold stud earrings to be worn in the lobe of the ear. No other piercings are permitted. These will be confiscated if seen.

Hair

We expect hairstyles suitable for the school environment.

- Only black, brown or blonde dyed hair is acceptable.
- No other dyed colours or streaks are acceptable.
- Tramlines and shaved head designs are not acceptable.
- No slits shaved in eyebrows.

NECKLACES

- Students are not allowed to wear necklaces to school. If a student wears a necklace for religious reasons then this must be completely out of sight and tucked under the shirt. It must be completely not visible
- If a necklace is seen, then this will be confiscated.

COATS

- Sensible school coat in a dark colour must be worn. No leather or denim jackets.
- No sweatshirts, tracksuit tops or cardigans.



SUNGLASSES

We do not allow students to have sunglasses at school. All styles. These will be confiscated if worn on the school site.



BALACLAVAS & SNOODS

Students are not allowed BalACLAVAS or Snoods in school. Neither of these are replacements for medical face masks.



CASUAL SPORTS JACKET /HOODIES

This is not a definitive list but this type of hoody top /jacket are not permitted. Please note similar styles to this are also not permitted. Please consult your tutor or HOY if you are not sure before purchasing for school.



HATS

- No hats to be worn in the building at any time
- Woollen or fleece hats allowed in the playground during winter.
- No caps at any time
- Phones and headphones should not be used or visible during the school day.

SCHOOL PE KIT

- Green shirt with logo
- Black tracksuit bottoms or shorts
- Trainers

Please follow the link at the front of the booklet to purchase.

HEAD COVERINGS

Students, who wish to for religious purposes wear a head covering, may wear a plain, black or white head-covering.



Mulberry

Academy Woodside

Mulberry Academy Woodside
White Hart Lane, Wood Green, London N22 5QJ
☎ 020 8889 676 ✉ mail@mulberrywoodside.org
🌐 www.mulberrywoodside.org

Part of the

Mulberry
Schools Trust



Mulberry Academy Woodside is part of the Mulberry Schools Trust which is a charitable company limited by guarantee registered in England and Wales (Company No. 10035860).
Company's registered office: Mulberry Schools Trust, Richard Street, Commercial Road, London E1 2JP