

# NEWSLETTER

14.10.22 | Issue 322

Dear Parents and Carers,

A huge thank you to all the students who supported us at our Open Evening, it was so nice to see so many of our local and new families. It truly was a student-run event, with students helping in all departments, tours and speeches. Do pass on our well done to your child for their involvement, we are so proud to have such great students in our school. A reminder to those of you who are applying for a year 6 student, the deadline is the 31st October.

We are now in the middle of Black History Month, with lessons on celebration, the focus is, 'Time for change: Action not words' students have been embodying this by leading assemblies and preparing original artwork. On Monday 17th, we have our Black History Month celebration where you will be able to hear original readings, dances, and music that will promote some of this work. Please book [here](#) for a free ticket.

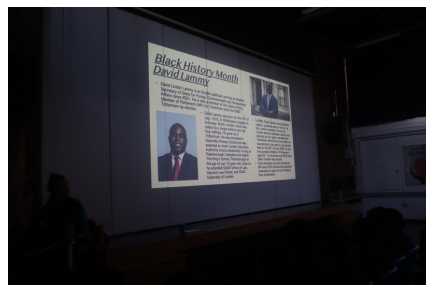
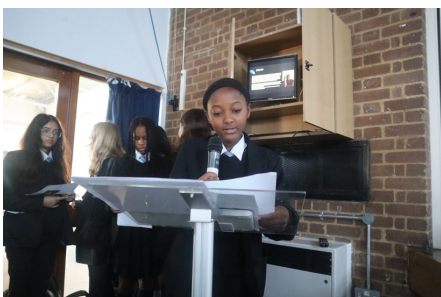
Thank you to parents who attended the Key 30 parents event, if you were unable to attend please complete the permission sheet. We are offering more interventions than ever before for Year 11 including after-school booster; One Degree; NTP Tutoring; Saturday maths class, daily after-school study provision, and sessions with LAET. The most important work though happens in the classroom, please ensure that your child is in on time, every day.

Next week is the Careers Fair, an event that all Year 10 and Year 11 will engage in but all families are welcome to join should they wish to meet local providers.

With the half term fast approaching a message to families on FSM that vouchers will be provided.

All the best for the weekend

**Angela Wallace**  
Headteacher



## BHM CELEBRATION FREE TICKET



## SOCIAL MEDIA



@woodsidehighsch

## MY ED APP

If you haven't got the MyEd app, you can scan the QR code below to download the app.



## CONTACT US

mail@woodsidehighschool.co.uk

020 8889 6761

# WOODSIDE RULES EXPLAINED

Some parents have asked about some of our rule changes and why they are in place.

Every decision we make at Woodside is built with the objective to be exceptional. It's important we keep the highest standards of behaviour at all times

Line ups - line ups take place daily and these are a way to bring students together after social time and ensure that all students break between social and formal lesson times. Students have three minutes to find their lines and then raise their hands, the hand is a visual symbol that students are focused on their Head of Year and ready for learning.

Juices - students still ask about the juices. We are now a water only school. Even natural fruit juices are full of sugar and this does not support student energy levels. A high concentration of sugar can lead to a high and a low, not helpful for learning. The juices also caused a huge amount of unrecyclable rubbish. Please do send students in with water bottles.

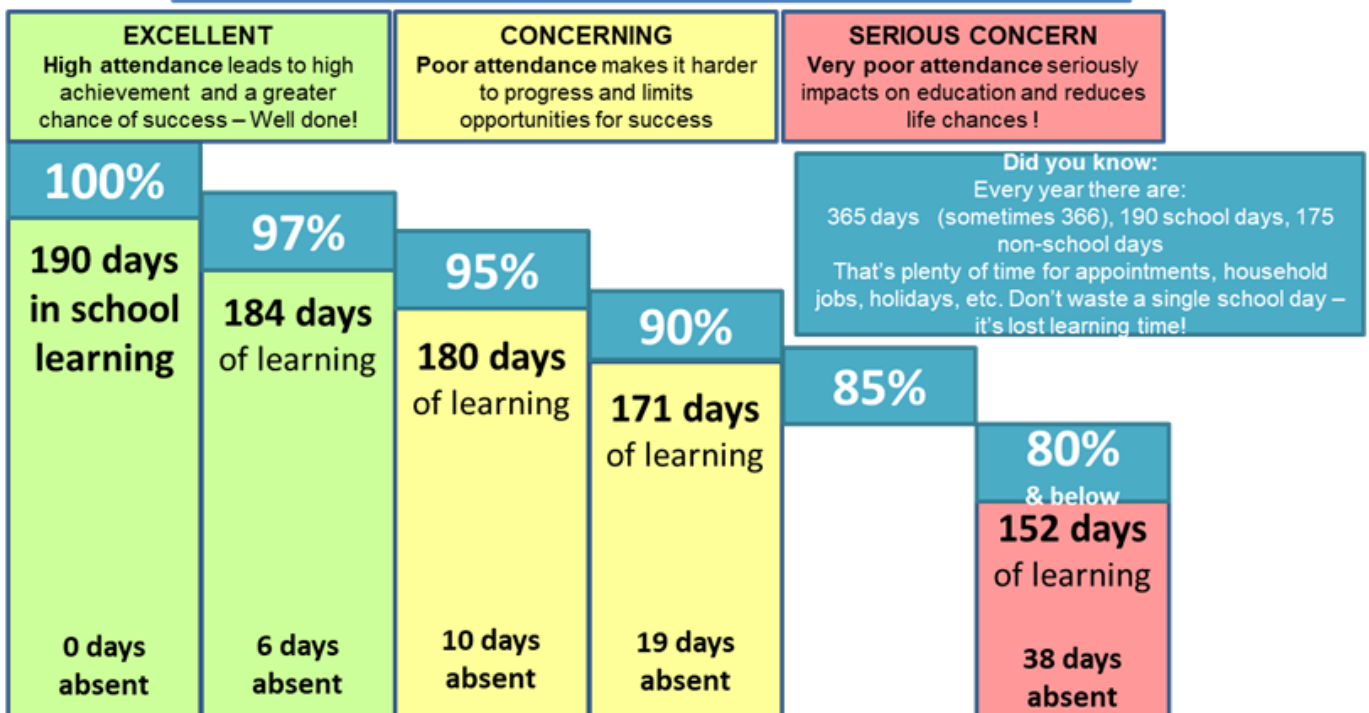
Why are we so strict on uniform? Uniform represents our school. Having the uniform on prepares students for a professional environment. If we start letting some things in the whole high standard of uniform can be lost. Our exceptional objectives means we want students look their most presentable.

The toilets; the school toilets are open before, lunch and break and after school on all floors. When the first bell goes the toilets are locked to ensure that students get promptly to lessons or line ups. The toilets in Birch block on the bottom floor are the only ones always open so there is always a toilet, however, students do need to get notes, it's about keeping students safe

Ms Wallace

## Attend and Achieve

**School success starts with showing up**  
**Every school day counts**



The **Attend and Achieve** approach to education at Woodside is rooted in the fact that school attendance is a significant determining factor in attainment outcomes and GCSE grades. Students with no absence are 2.2 times more likely to achieve 5+ GCSEs A\* - C or equivalent

**Excellent attendance means being in school at least 97% of the time or at least 184 days**



## Woodside High School

White Hart Lane, Wood Green, London N22 5QJ  
Telephone: 020 8889 6761, Fax: 020 8365 8164  
Email: [mail@woodsidehighschool.co.uk](mailto:mail@woodsidehighschool.co.uk)  
Website: [www.woodsidehighschool.co.uk](http://www.woodsidehighschool.co.uk)

---

Dear Parents/Carers

I am writing to you about some important changes which are proposed to take place at Woodside. You will be aware that since my appointment I have introduced many things to secure the highest quality in relation to classroom practice, standards of behaviour and extra-curricular activities. The staff and governing body are absolutely committed to carrying out our mission statement to offer *exceptional education and experiences for every child, every day*. Therefore, it is with this in mind we are in the process of consulting families and key stakeholders about a movement to Mulberry Schools Trust.

Woodside has been a single school academy since 2011 and the movement to a trust would allow us a wider network of schools to collaborate with. The key motivating factors and advantages to this move would be

- To offer more opportunities to our young people such as educational conferences, inter school competition, participating in Mulberry programmes such as the STEM academy <http://www.mulberryschoolstrust.org/stemacademy/>
- To offer us school to school support including teacher training, subject networks, and curriculum development work
- To support operational structures of the schools such as improving IT systems and financial efficiency
- Attracting the best staff to work for us

### Why Mulberry Trust:

Mulberry Trust is a rapidly growing trust based in inner London which has both primary schools, secondary schools, and UTC in the wider Trust. All these schools are Outstanding or good and have excellent reputations. The values of the Trust are very much in line with Woodside's \* please see below for Mulberry Trust values.

### Will Woodside change? What will it mean for my child

Day to day Woodside will remain much the same, there will be no changes to staffing and in fact joining the Trust will improve teaching. Your child's school experience will be the same but will more opportunities as mentioned above.

### Will our school still be Woodside?

Yes, we will add Mulberry to our longer name but it will still be called Woodside

### Are these changes just happening at Woodside?

No, all schools are being asked to join Trusts, Woodside's Governing body has been considering this for some time to address the fact we are a single school. The early movement means we can choose a Trust that is a good fit for Woodside

The White paper <https://www.gov.uk/government/news/schools-white-paper-delivers-real-action-to-level-up-education> "By 2030 all children will benefit from being taught in a school in, or in the process of joining, a strong multi-academy trust, which will help transform underperforming schools and deliver the best possible outcomes for children"

### What next?

We will be holding a public consultation, here at Woodside on Wednesday 19th October at 4pm

---

Head Teacher: Ms Angela Wallace



If you have any specific questions please can you submit these to this email address before the consultation date [matquestions@woodsidehighschool.co.uk](mailto:matquestions@woodsidehighschool.co.uk)

If you cannot make this date we will have information stands at all our forthcoming parents evening or please arrange for an appointment to discuss by emailing this address [matquestions@woodsidehighschool.co.uk](mailto:matquestions@woodsidehighschool.co.uk)

To find out more visit

<https://mulberryschoolstrust.org/>

Our vision is to be a key provider for quality education so that all of our students leave us as highly qualified, confident and articulate young people with a wealth of experience.

A Mulberry education is premised on three under-pinning principles:

1. **Access to education and the chance to be educated is a human right in a civilised world.**

A state school, like those in the Mulberry Schools Trust, should provide a high quality education for every child regardless of the barriers. As well as the intrinsic value in this, there are important social and economic reasons for doing this that affect the peace and security of our society profoundly.

2. **Education should provide rich intellectual and personal development for individuals and communities of people.**

An education offered by the Trust is concerned with the spiritual, moral, social, cultural and physical development of people so they have self-determination and can create for themselves fulfilled, happy lives. It is also concerned with equipping people for employment, making a contribution to the economy as well as enabling them to sustain themselves financially.

3. **Education is a public good.**

To have universal school education brings economic and social benefits to the whole of society as well as enriching the human condition: it creates greater peace, prosperity and economic and social wellbeing. The Mulberry Schools Trust is outward facing and contributes to education beyond the doors of its own schools.

These principles shape the aims of the Trust's education: the curriculum that is delivered, the personal development that is offered and the wider opportunities for enrichment that are provided.

Yours sincerely



Angela Wallace  
Headteacher



*lunchtime club*

*Week 1*

Wednesday

Thursday

Friday

*Week 2*

Monday

Tuesday

Thursday

Friday

October

2022

Half term

**FUN**

Activities, courses  
and events for  
children and young  
people in Haringey

**£1**

swim

for all under 16 years  
old (excluding  
Lido)

